



# CORE PLAZA

221 W. Webster Avenue | Muskegon, MI 49440

Listed By:

TROY WASSERMAN  
231 750 9627  
[troywasserman@corerealty.com](mailto:troywasserman@corerealty.com)

BRYAN BENCH  
231 578 2508  
[bryanbench@corerealty.com](mailto:bryanbench@corerealty.com)

CORE  
COMMERCIAL 



## PROPERTY OVERVIEW

Core Plaza is a 42,888 square foot building currently occupied and being simultaneously restored level by level, to a full-service multi-use development in downtown Muskegon.

### FLOOR 1 | LUMBERMAN'S VAULT

Be a part of Muskegon's newest downtown hot spot. Lumberman's Vault will be a showcase for some of Muskegon's best ingredients, chefs, and entrepreneurs. The food stalls will house chef-driven concepts that work cohesively together. Lumberman's Vault will also be home to Liquid Assets, Muskegon's newest cocktail bar and lounge. The street-level mezzanine overlooking the food court and cocktail lounge will be home to retail bays perfect for boutique like storefronts, Salons, gift shops and more. The building will be a destination hub connecting people through food while preserving the legacy of a celebrated downtown landmark.

### FLOOR 2 | BOUTIQUE RETAIL SUITES

The second floor which will overlook The Lumberman's Vault food court and Liquid Assets Cocktail & Wine Bar will be home to eight unique, boutique like retail suites. Various suite sizes and build-out options are available. The restoration of the building is centered on preserving many original features such as the bank vault, safety deposit boxes, newspaper clippings and construction photos. Call or email to set up a tour to see for yourself one of Downtown Muskegon's exciting new projects.

### FLOOR 3 | CORPORATE OFFICE USER | COWORKING OFFICE SUITES

### FLOOR 4 | CORPORATE OFFICE USER

### FLOOR 5 | COWORKING OFFICE SUITES

Multiple lease options are available ranging in size from 106 – 197 SF. Rates are gross, with use of nicely-appointed reception area, conference rooms, and employee kitchen/break area.

### FLOOR 6 | OCCUPIED BY CORPORATE OFFICE USER

Listed By:

TROY WASSERMAN  
231 750 9627  
troywasserman@corerealty.com

BRYAN BENCH  
231 578 2508  
bryanbench@corerealty.com

**CORE**   
COMMERCIAL



# JUMBERMAN'S VAULT

— UNLOCK YOUR APPETITE —

FLOOR 1

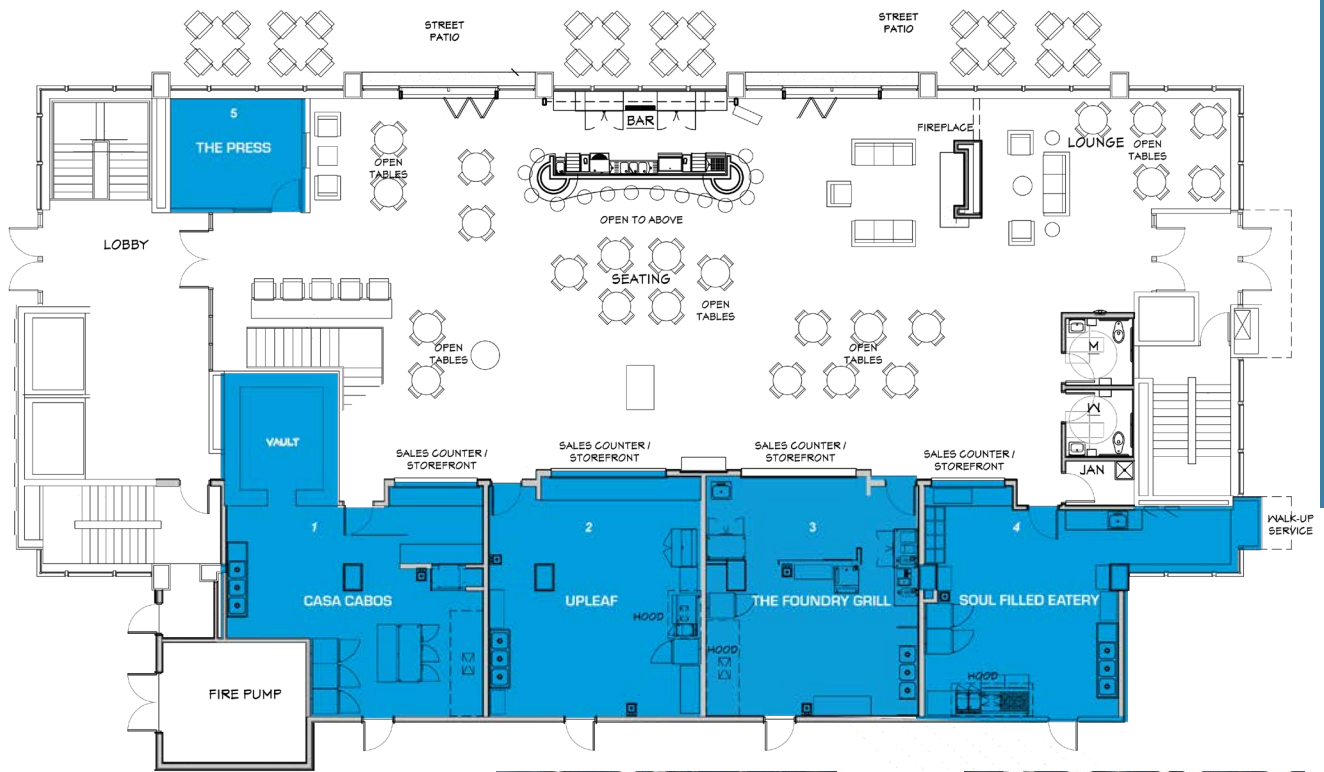
Listed By:

TROY WASSERMAN  
231 750 9627  
[troywasserman@corealty.com](mailto:troywasserman@corealty.com)

BRYAN BENCH  
231 578 2508  
[bryanbench@corealty.com](mailto:bryanbench@corealty.com)

**CORE**  
COMMERCIAL





\*For informational purposes only. Dimensions to be verified.

Listed By:

TROY WASSERMAN  
231 750 9627  
troywasserman@corealty.com

BRYAN BENCH  
231 578 2508  
bryanbench@corealty.com

CORE  
COMMERCIAL





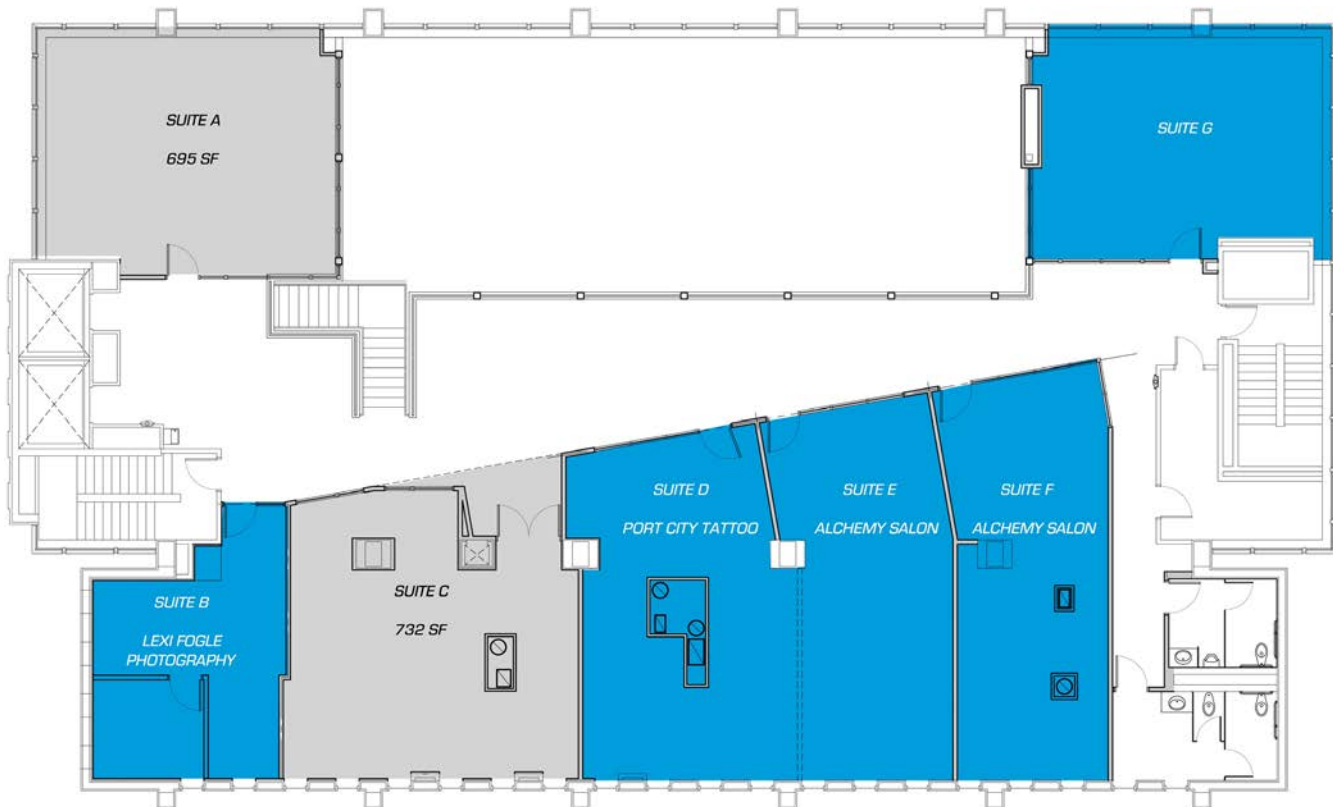
## FLOOR 2

Listed By:

TROY WASSERMAN  
231 750 9627  
[troywasserman@corerealty.com](mailto:troywasserman@corerealty.com)

BRYAN BENCH  
231 578 2508  
[bryanbench@corerealty.com](mailto:bryanbench@corerealty.com)

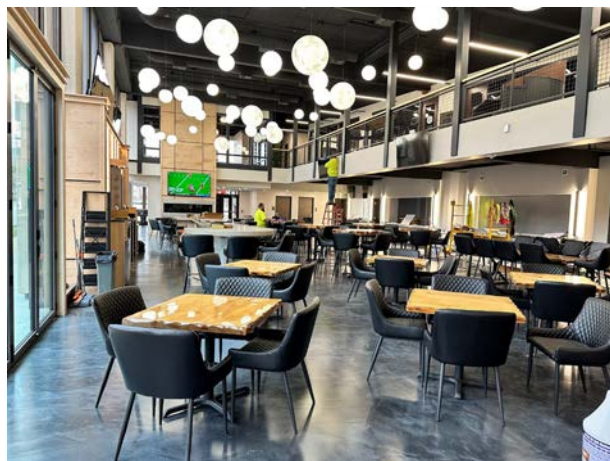
**CORE**   
COMMERCIAL



## FLOOR 2

### AVAILABILITY OPTIONS

UNIT	SF	PRICE/SF/YR	PRICE/MO
A	695	\$28.00	\$1,621.67
C	732	\$25.00	\$1,525.00



\*For informational purposes only. Dimensions to be verified.

Listed By:

TROY WASSERMAN  
231 750 9627  
troywasserman@corerealty.com

BRYAN BENCH  
231 578 2508  
bryanbench@corerealty.com

**CORE**  
COMMERCIAL





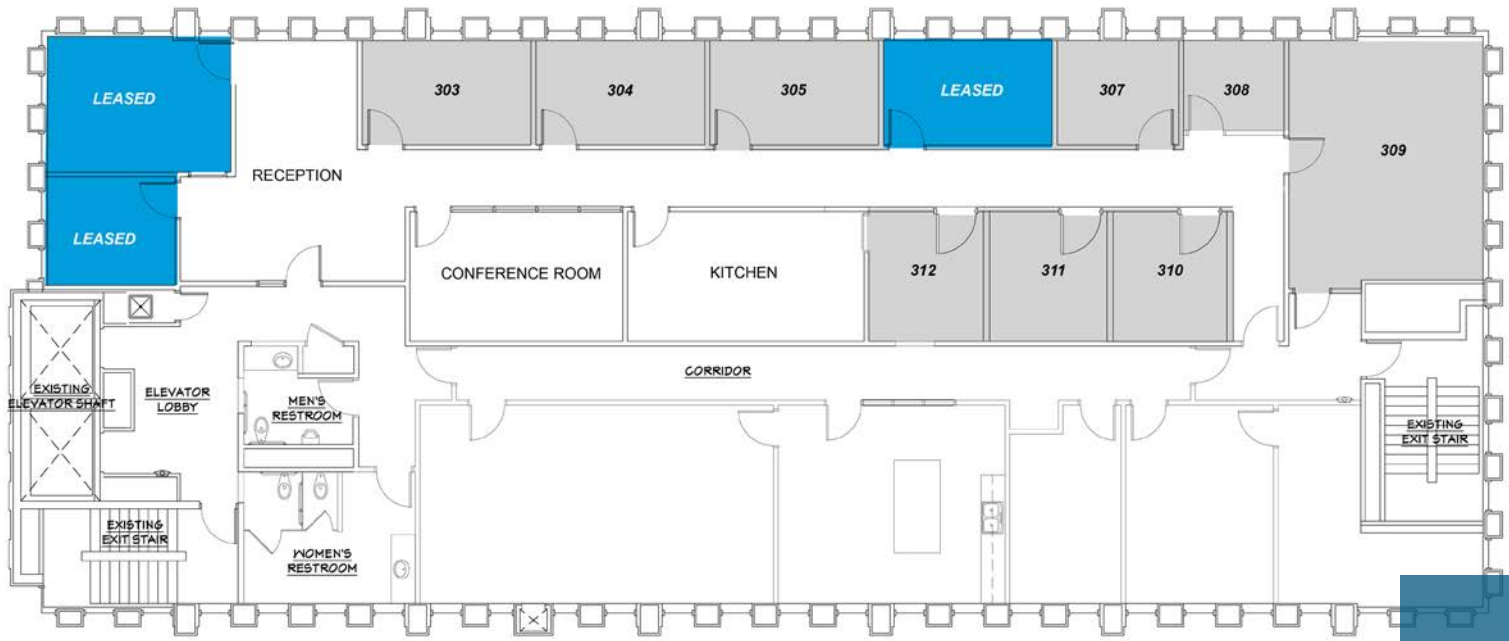
## FLOOR 3

Listed By:

TROY WASSERMAN  
231 750 9627  
[troywasserman@corerealty.com](mailto:troywasserman@corerealty.com)

BRYAN BENCH  
231 578 2508  
[bryanbench@corerealty.com](mailto:bryanbench@corerealty.com)

**CORE**   
COMMERCIAL



## FLOOR 3

UNIT	SF	PRICE/MO
303	126	\$700.00
304	126	\$700.00
305	126	\$700.00
307	90	\$550.00
308	72	\$400.00
309	352	\$1,400.00
310	121	\$550.00
311	121	\$550.00
312	121	\$550.00

\*For informational purposes only. Dimensions to be verified.

Listed By:

TROY WASSERMAN  
231 750 9627  
troywasserman@corerealty.com

BRYAN BENCH  
231 578 2508  
bryanbench@corerealty.com

**CORE**  
COMMERCIAL





FLOOR 5

Listed By:

TROY WASSERMAN  
231 750 9627  
troywasserman@corerealty.com

BRYAN BENCH  
231 578 2508  
bryanbench@corerealty.com

**CORE**   
COMMERCIAL



For illustrative purposes only. Not drawn to scale.

OFFICE SPACE AVAILABILITY					
UNIT	SQUARE FEET	PRICE PER MONTH	UNIT	SQUARE FEET	PRICE PER MONTH
501	352	\$925.00	509	106	\$650.00
502	203	\$650.00	510	113	\$650.00
503	108	\$650.00	511	113	\$660.00
504	164	\$675.00	512	113	\$650.00
505	197	\$725.00	513	113	\$650.00
506	175	\$675.00	514	229	\$837.50
507	232	\$725.00	515	153	\$675.00

\*For informational purposes only. Dimensions to be verified.

FLOOR 5

Listed By:

TROY WASSERMAN  
231 750 9627  
troywasserman@corerealty.com

BRYAN BENCH  
231 578 2508  
bryanbench@corerealty.com







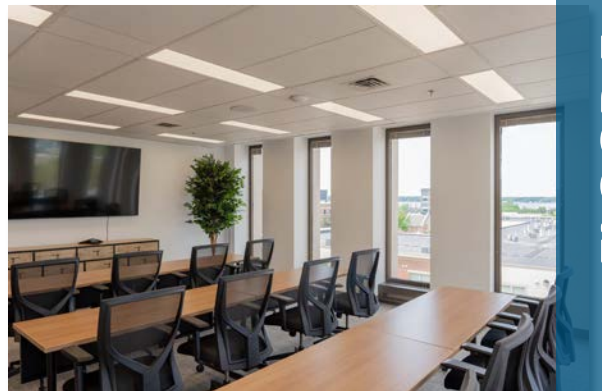
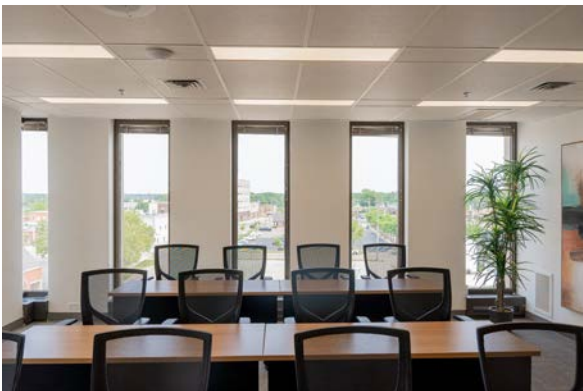
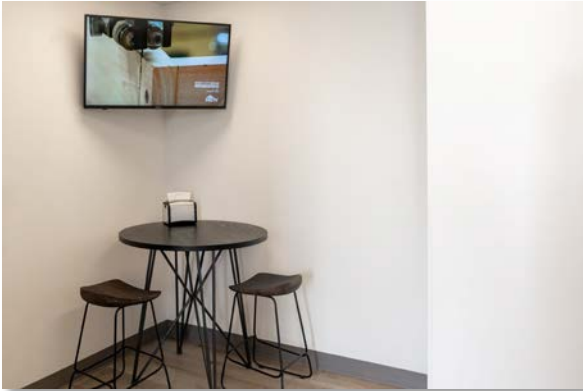
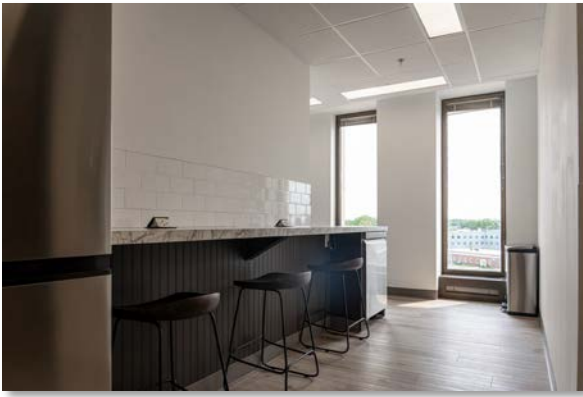
FLOOR 5

Listed By:

TROY WASSERMAN  
231 750 9627  
troywasserman@corerealty.com

BRYAN BENCH  
231 578 2508  
bryanbench@corerealty.com

CORE  
COMMERCIAL



FLOOR 5

Listed By:

TROY WASSERMAN  
231 750 9627  
troywasserman@corerealty.com

BRYAN BENCH  
231 578 2508  
bryanbench@corerealty.com

CORE  
COMMERCIAL

